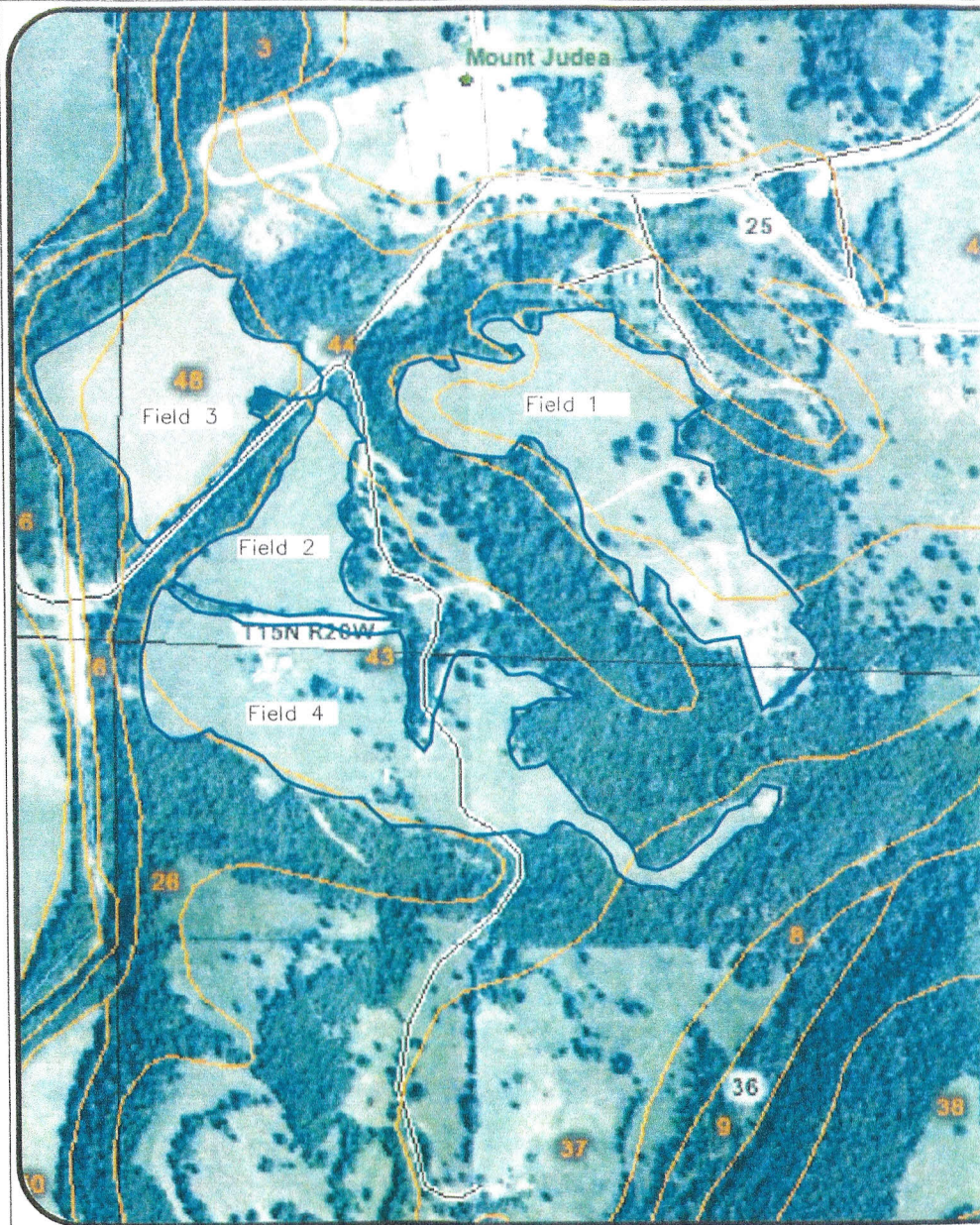


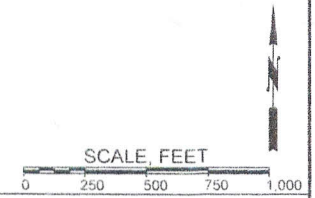
ATTACHMENT 3



LEGEND

- 2 Arkana-Moko complex, 8 to 20 percent slopes
- 3 Arkana-Moko complex, 20 to 40 percent slopes
- 6 Ceda-Kenn complex, frequently flooded
- 7 Clarksville very cherty silt loam, 20 to 50 percent slopes
- 8 Eden-Newnata complex, 8 to 20 percent slopes
- 9 Eden-Newnata complex, 20 to 40 percent slopes
- 15 Enders-Leesburg stony loams, 8 to 20 percent slopes
- 16 Enders-Leesburg stony loams, 20 to 40 percent slopes
- 26 Moko-Rock outcrop complex, 15 to 50 percent slopes
- 37 Nella-Steprock complex, 8 to 20 percent slopes
- 38 Nella-Steprock-Mountainburg very stony loams, 20 to 40 percent slopes
- 39 Nella-Steprock-Mountainburg very stony loams, 40 to 60 percent slopes
- 42 Noark very cherty silt loam, 3 to 8 percent slopes
- 43 Noark very cherty silt loam, 8 to 20 percent slopes
- 44 Noark very cherty silt loam, 20 to 40 percent slopes
- 48 Razort loam, occasionally flooded
- 50 Spadra loam, occasionally flooded
- 51 Spadra loam, 2 to 5 percent slopes
- 54 Water

GENERAL NOTES



No.	Revision/Issue	Date

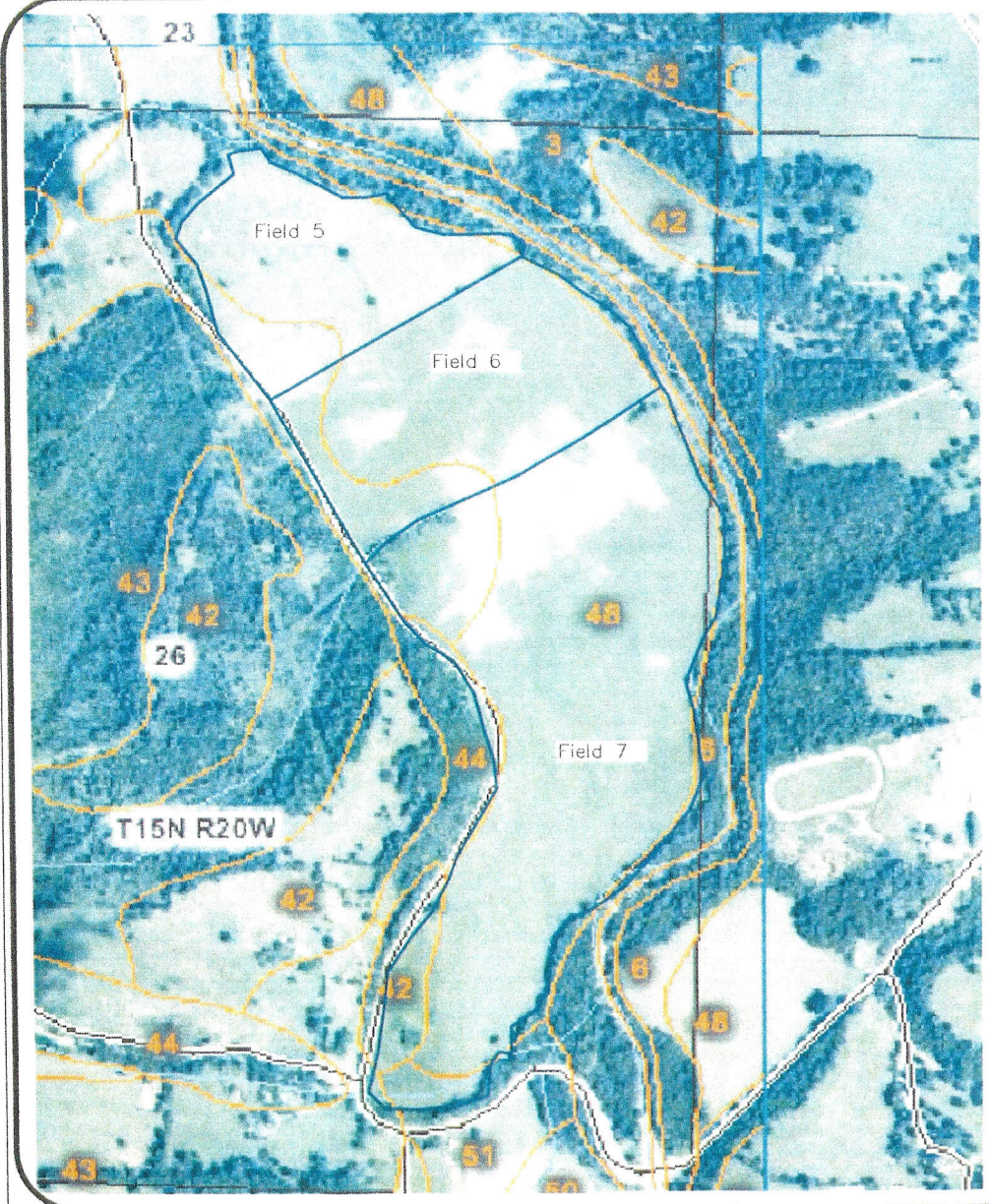
DeHaan, Grabs & Associates, LLC
 Consulting Engineers
 PO Box 522, Mandan, ND 58554
 (701) 663-1116, FAX: (701) 667-1356
 www.dgaengineering.com

C&H HOG FARMS
 GESTATION-FARROWING FARM

SECTION 25 AND 36, T 15 N, R 20 W
 NEWTON COUNTY, AR

FIELDS 1-4

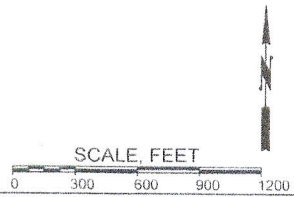
DATE: MAY 29, 2012	1
SCALE: 1" = 500'	
DRAWN BY: NAP	
CHECKED BY: DLD	



LEGEND

- 3 Arkana-Moko complex, 20 to 40 percent slopes
- 6 Ceda-Kenn complex, frequently flooded
- 11 Enders gravelly loam, 3 to 8 percent slopes
- 13 Enders stony loam, 3 to 20 percent slopes
- 26 Moko-Rock outcrop complex, 15 to 50 percent slopes
- 35 Nella-Enders stony loams, 8 to 20 percent slopes
- 42 Noark very cherty silt loam, 3 to 8 percent slopes
- 43 Noark very cherty silt loam, 8 to 20 percent slopes
- 44 Noark very cherty silt loam, 20 to 40 percent slopes
- 48 Razort loam, occasionally flooded
- 50 Spadra loam, occasionally flooded
- 51 Spadra loam, 2 to 5 percent slopes
- 54 Water

GENERAL NOTES



No	Revision/Issue	Date

DeHaan, Grabs & Associates, LLC
 Consulting Engineers
 PO Box 522, Mandan, ND 58554
 (701) 663-1116, FAX: (701) 667-1356
 www.dgaengineering.com

C&H HOG FARMS
GESTATION-FARROWING FARM

SECTION 26, T 15 N, R 20 W
 NEWTON COUNTY, AR

FIELDS 5-7

DATE: MAY 29, 2012	SHEET: 2
SCALE: 1" = 600'	
DRAWN BY: NAP	
CHECKED BY: DLD	



LEGEND

- 1 Arkana very cherty silt loam, 3 to 8 percent slopes
- 2 Arkana-Moko complex, 8 to 20 percent slopes
- 6 Ceda-Kenn complex, frequently flooded
- 11 Enders gravelly loam, 3 to 8 percent slopes
- 13 Enders stony loam, 3 to 20 percent slopes
- 26 Moko-Rock outcrop complex, 15 to 50 percent slopes
- 35 Nella-Enders stony loams, 8 to 20 percent slopes
- 37 Nella-Steprock complex, 8 to 20 percent slopes
- 42 Noark very cherty silt loam, 3 to 8 percent slopes
- 43 Noark very cherty silt loam, 8 to 20 percent slopes
- 44 Noark very cherty silt loam, 20 to 40 percent slopes
- 48 Razort loam, occasionally flooded
- 50 Spadra loam, occasionally flooded
- 51 Spadra loam, 2 to 5 percent slopes
- 54 Water

GENERAL NOTES

SCALE FEET

No.	Revision/Issue	Date

DeHaan, Grabs & Associates, LLC
 Consulting Engineers
 PO Box 522, Mandan, ND 58554
 (701) 663-1116, FAX: (701) 667-1356
 www.dgaengineering.com

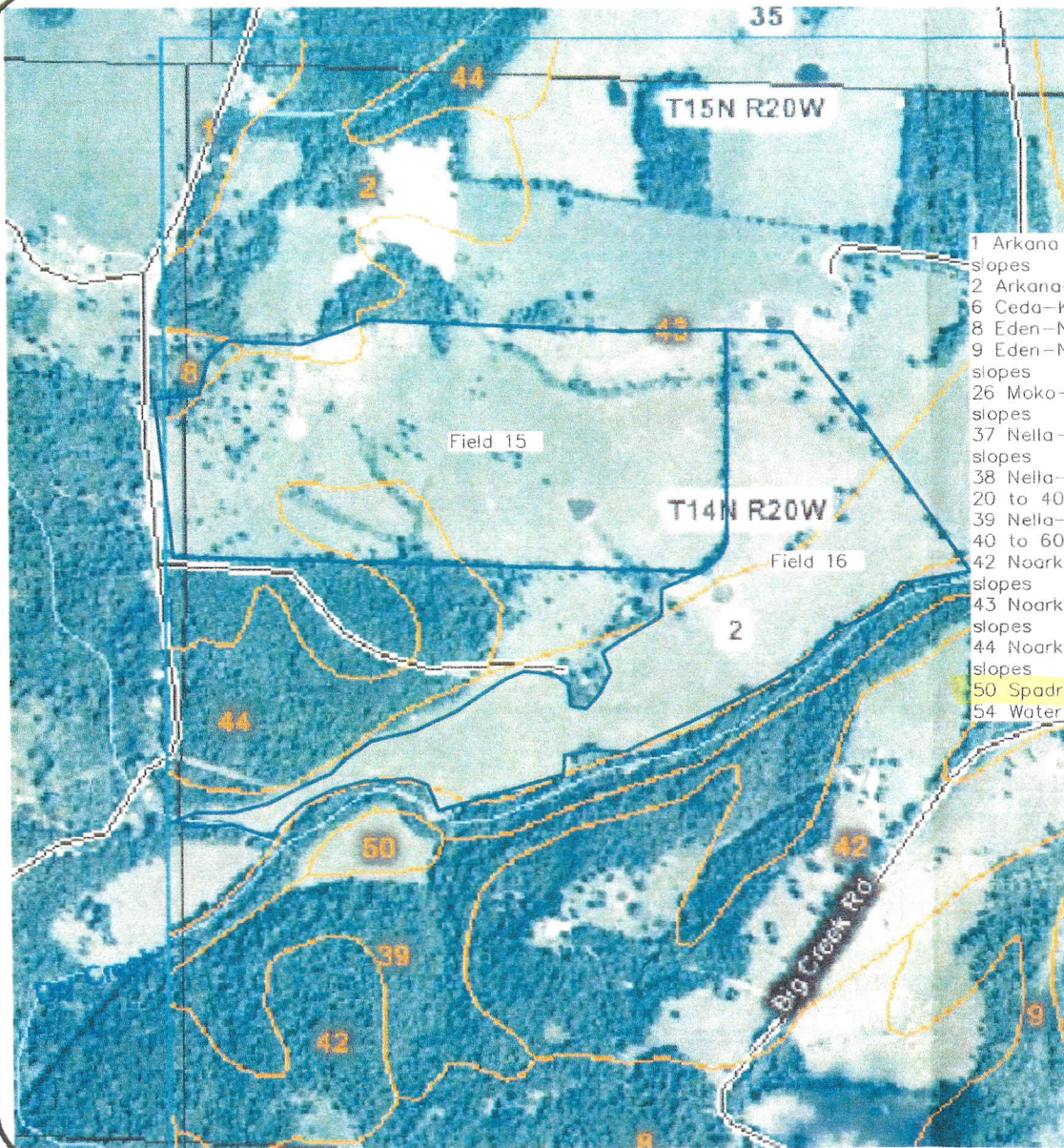
C&H HOG FARMS
 GESTATION-FARROWING FARM

SECTION 26, T 15 N, R 20 W
 NEWTON COUNTY, NE

FIELDS 8-16

DATE: MAY 29, 2012	SHEET:
SCALE: 1" = 600'	3
DRAWN BY: NAP	
CHECKED BY: DLD	

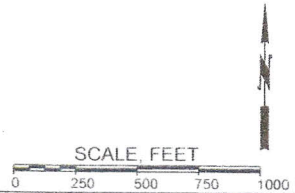
FILE NAME: 05 PROJECT FILES/SHINE/HENSON/GFES/PLAN



LEGEND

- 1 Arkana very cherty silt loam, 3 to 8 percent slopes
- 2 Arkana-Moko complex, 8 to 20 percent slopes
- 6 Ceda-Kenn complex, frequently flooded
- 8 Eden-Newnata complex, 8 to 20 percent slopes
- 9 Eden-Newnata complex, 20 to 40 percent slopes
- 26 Moko-Rock outcrop complex, 15 to 50 percent slopes
- 37 Nella-Steprock complex, 8 to 20 percent slopes
- 38 Nella-Steprock-Mountainburg very stony loams, 20 to 40 percent slopes
- 39 Nella-Steprock-Mountainburg very stony loams, 40 to 60 percent slopes
- 42 Noark very cherty silt loam, 3 to 8 percent slopes
- 43 Noark very cherty silt loam, 8 to 20 percent slopes
- 44 Noark very cherty silt loam, 20 to 40 percent slopes
- 50 Spadra loam, occasionally flooded
- 54 Water

GENERAL NOTES



No.	Revision/Issue	Date

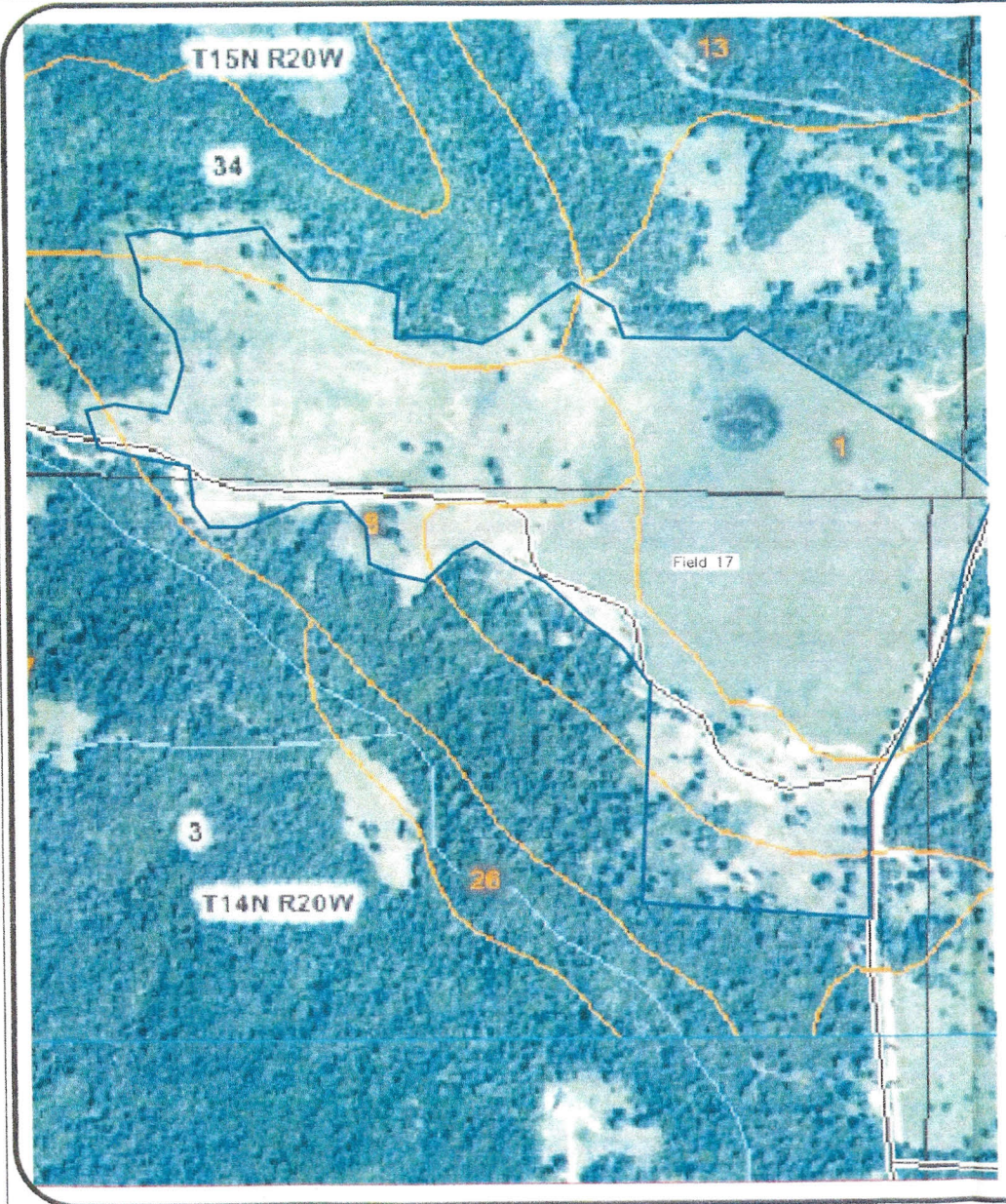
DeHaan, Grabs & Associates, LLC
 Consulting Engineers
 PO Box 522, Manant, MD 58554
 (701) 663-1116, FAX: (701) 667-1356
 www.dgaengineering.com

C&H HOG FARMS
 GESTATION-FARROWING FARM

SECTION 5, T 14 N, R 20 W
 NEWTON COUNTY, AR

FIELDS 15-16

DATE: MAY 29, 2012	SHEET: 4
SCALE: 1" = 500'	
DRAWN BY: NAP	
CHECKED BY: DLD	



LEGEND

- 1 Arkana very cherty silt loam, 3 to 8 percent slopes
- 2 Arkana-Moko complex, 8 to 20 percent slopes
- 8 Eden-Newnata complex, 8 to 20 percent slopes
- 13 Enders stony loam, 3 to 20 percent slopes
- 26 Moko-Rock outcrop complex, 15 to 50 percent slopes
- 36 Nella-Enders stony loams, 20 to 40 percent slopes
- 37 Nella-Steprock complex, 8 to 20 percent slopes
- 39 Nella-Steprock-Mountainburg very stony loams, 40 to 60 percent slopes
- 43 Noark very cherty silt loam, 8 to 20 percent slopes
- 44 Noark very cherty silt loam, 20 to 40 percent slopes

GENERAL NOTES



SCALE FEET



No.	Revision/Issue	Date

DeHaan, Grabs & Associates, LLC
 Consulting Engineers
 PO Box 522, Mandan, ND 58554
 (701) 663-1116, FAX (701) 667-1356
 www.dgaengineering.com

C&H HOG FARMS
 GESTATION-FARROWING FARM

SECTION 3, T 14 N, R 20 W
 NEWTON COUNTY, AR

FIELD 17

DATE: MAY 29, 2012	SHEET:
SCALE: 1" = 500'	5
DRAWN BY: NAP	
CHECKED BY: DLD	

FILE NAME: 05 PROJECT FILES/SWIRL/NEWTON/FILES/PLAN