

**Big Creek Research and Extension Team**  
University of Arkansas System Division of Agriculture  
Quarterly Report - October 2013 to December 2013

---

**DEMONSTRATING AND  
MONITORING THE  
SUSTAINABLE  
MANAGEMENT OF  
NUTRIENTS ON C&H FARM  
IN BIG CREEK WATERSHED**

**Addendum**

---



The Division of Agriculture offers its programs to all eligible persons regardless of race, color, national origin, religion, gender, age, disability, marital or veteran status, or any other legally protected status, and is an Affirmative Action/Equal Opportunity Employer.

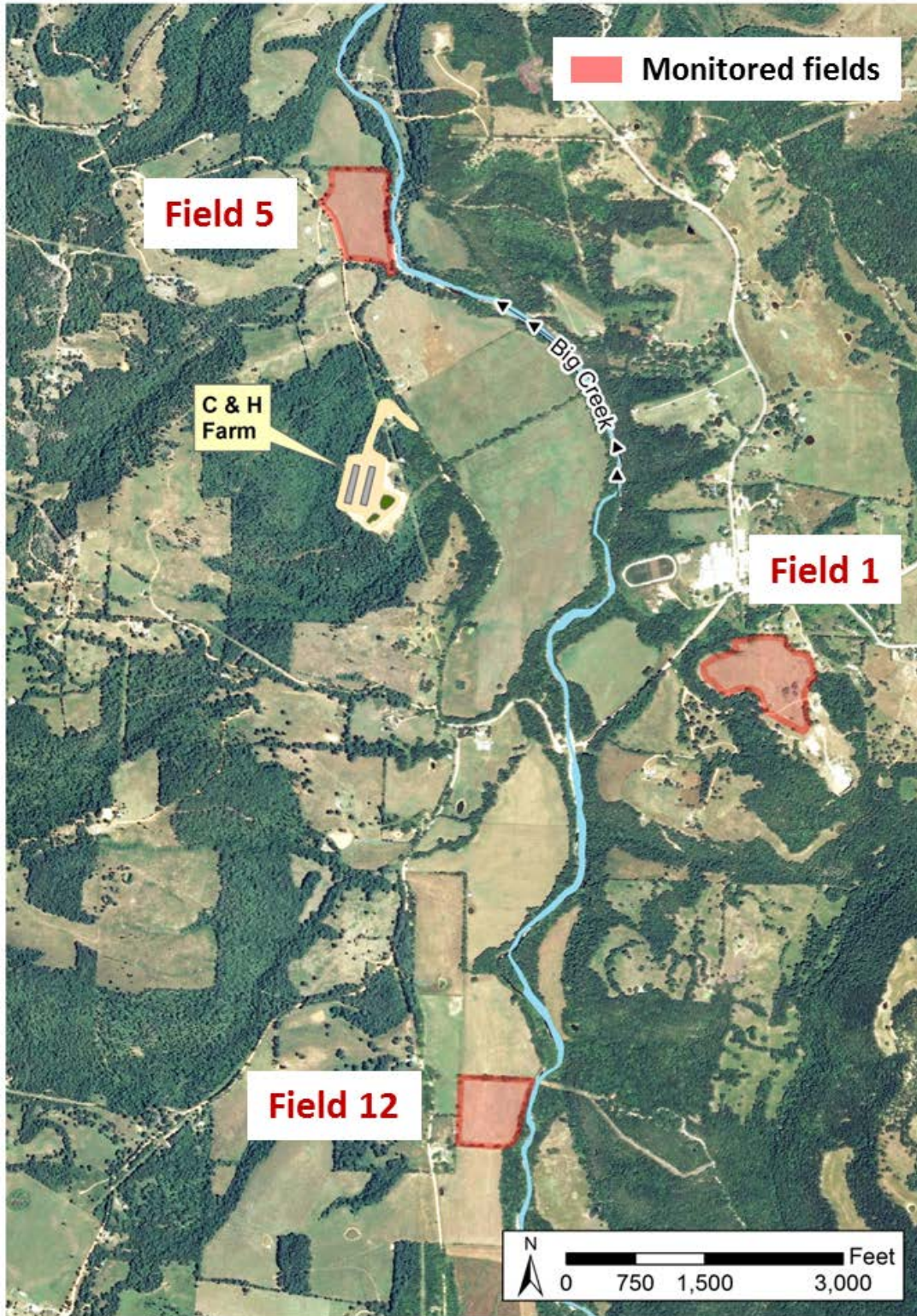
## Addendum

The Quarterly Report for the Big Creek Research and Extension Team activity for October 1 to December 31, 2013 contained fields that were incorrectly identified in the original Comprehensive Nutrient Management Plan. The following maps correctly designate all fields that we currently have permission to collect soil and water samples from and which we accessed to date and will continue to in compliance with our stated tasks.

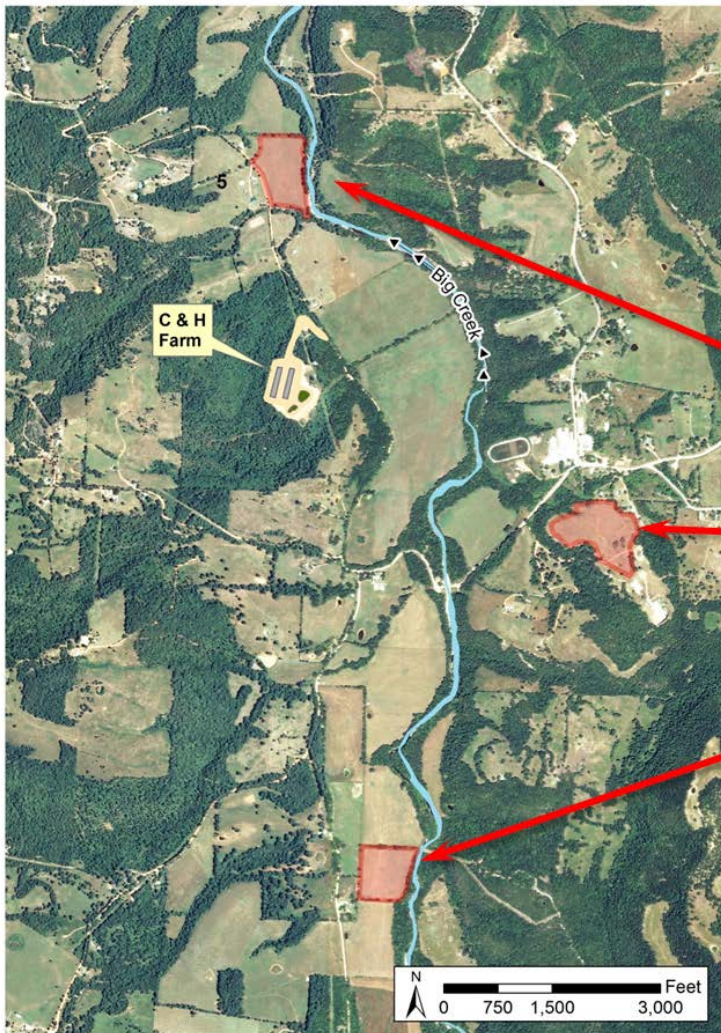
### Table of Contents (with original Quarterly Report page numbers in parenthesis)

Map 2. Location of monitored fields on the C&H operation Mt. Judea, Newton County, AR (Page 13). ...	3
Map 5. Location of monitored fields and soil test P levels on the C&H Farm operation Mt. Judea, Newton County, AR (Page 18).....	4
Map 6. Location of water sampling locations on and adjacent to the C&H Farm operation Mt. Judea, Newton County, AR (Page 19).....	5
Map 7. Gridded layout of the sampled fields on the C&H Farm operation Mt. Judea, Newton County, AR (Page 34). ....	6
Map 11. Potential sampling locations for Field 1 (Page 59). ....	7
Map 12. Potential sampling locations for Field 5 (Page 60). ....	8
Map 13. Potential sampling locations for Field 12 (Page 61). ....	9

Map 2. Location of monitored fields on the C&H operation Mt. Judea, Newton County, AR (Page 13).

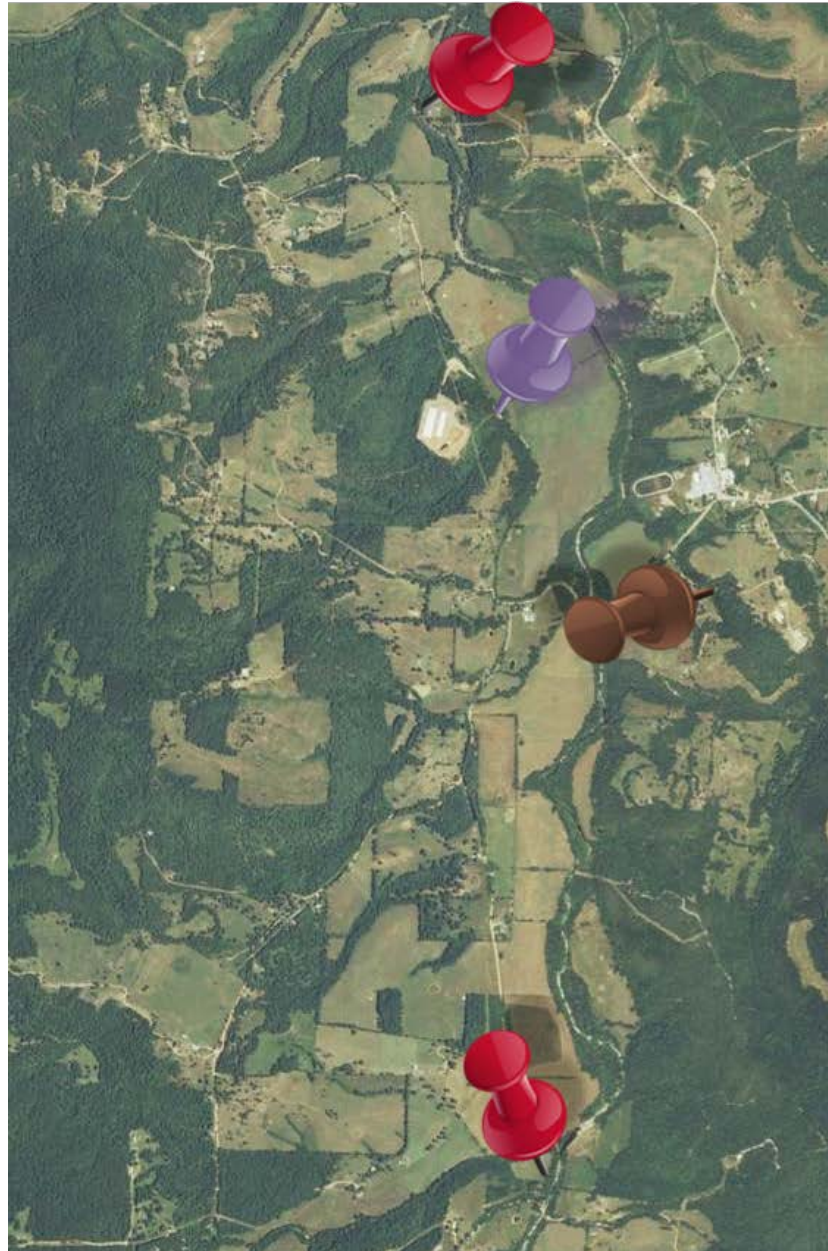


**Map 5. Location of monitored fields and soil test P levels on the C&H Farm operation Mt. Judea, Newton County, AR (Page 18).**



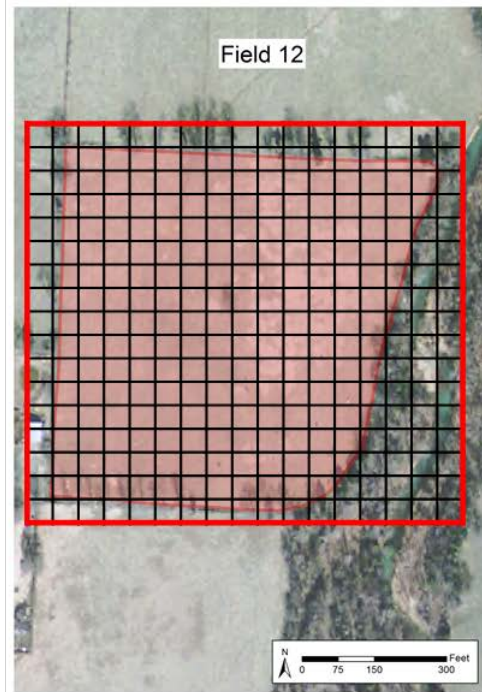
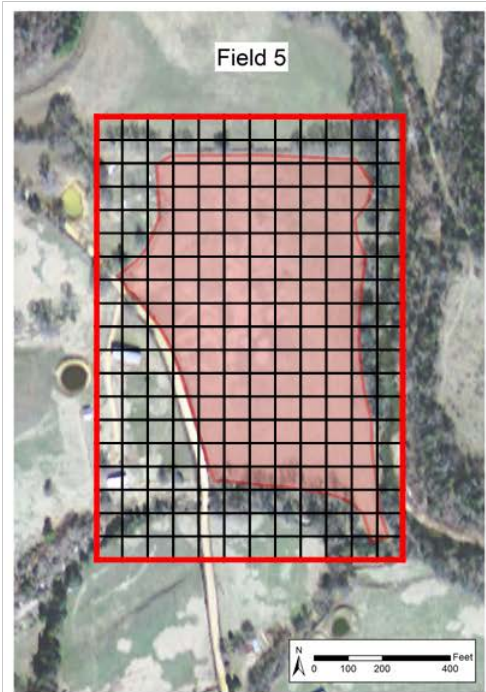
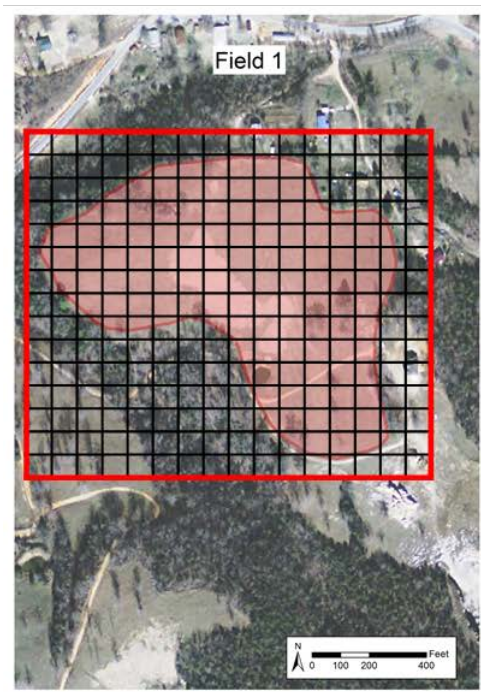
Field #	Area, acres	Soil test P, mg/kg
5	23.8	65
1	15.6	83
12	23.7	19

**Map 6. Location of water sampling locations on and adjacent to the C&H Farm operation Mt. Judea, Newton County, AR (Page 19).**

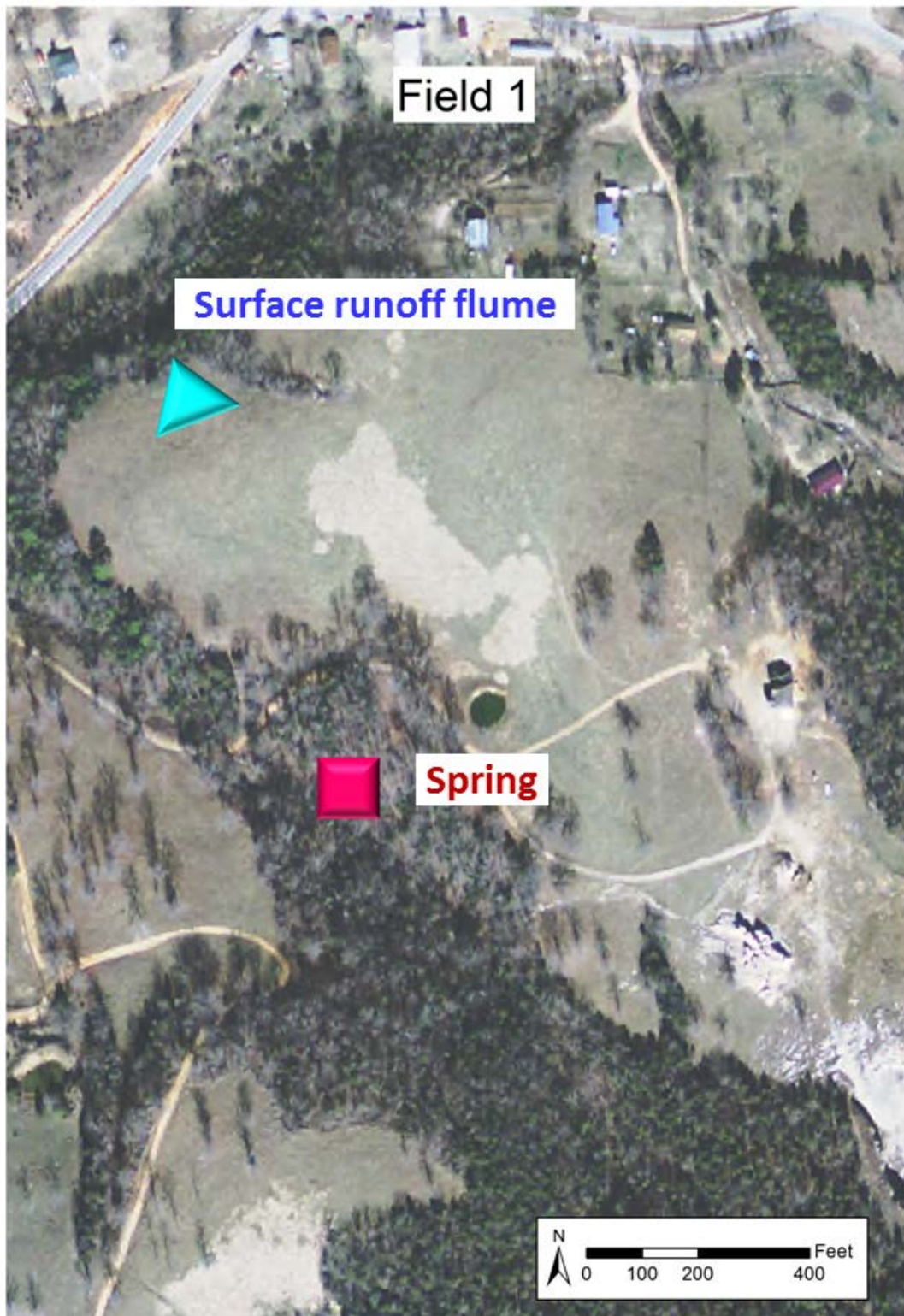


-  Big Creek
-  Ephemeral stream
-  Spring

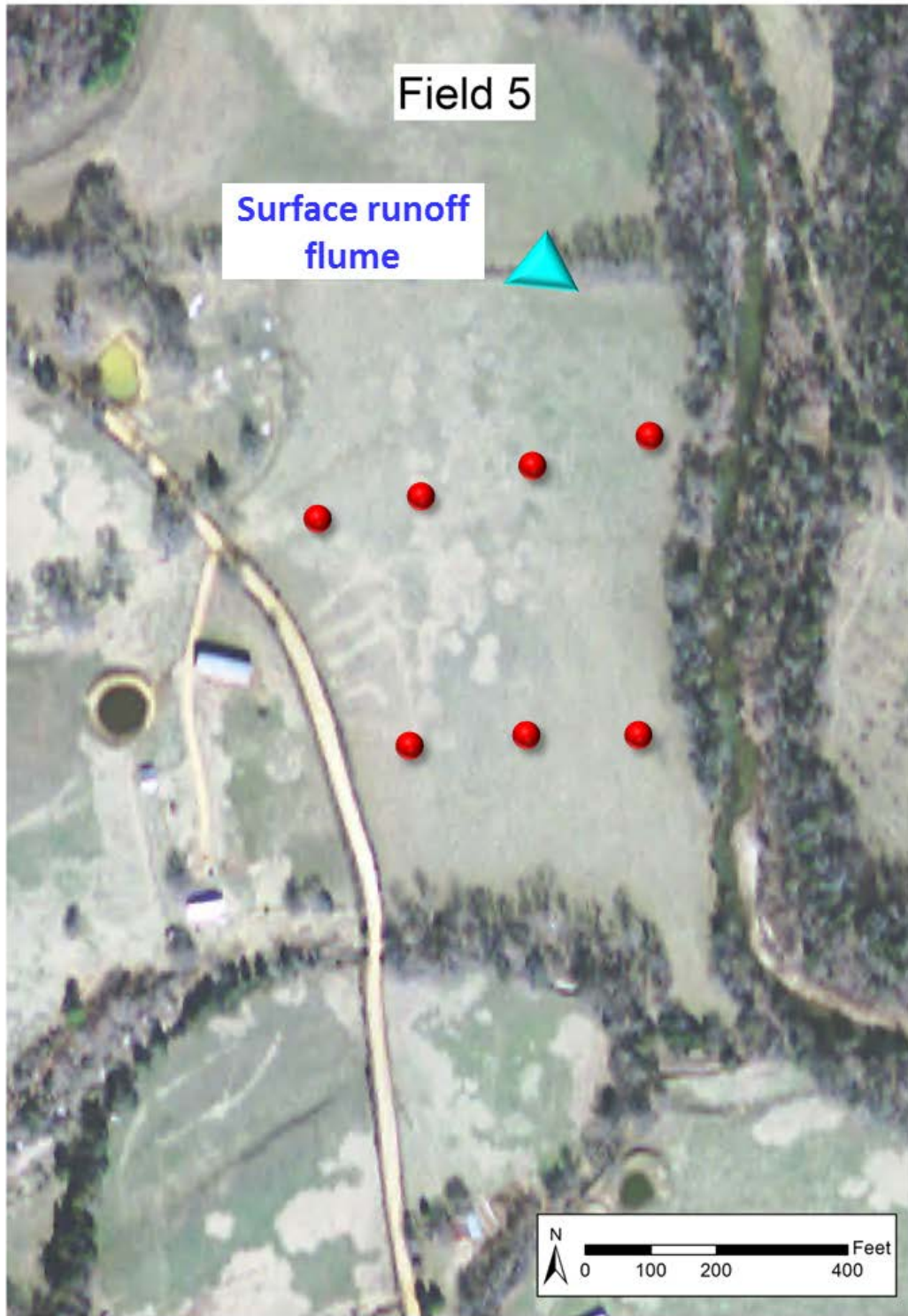
**Map 7. Gridded layout of the sampled fields on the C&H Farm operation Mt. Judea, Newton County, AR (Page 34).**



Map 11. Potential sampling locations for Field 1 (Page 59).



Map 12. Potential sampling locations for Field 5 (Page 60).



● Piezometer / monitoring well



Map 13. Potential sampling locations for Field 12 (Page 61).



Piezometer / monitoring well