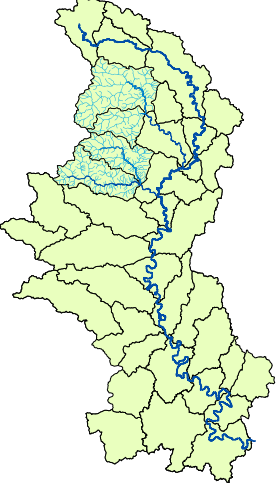
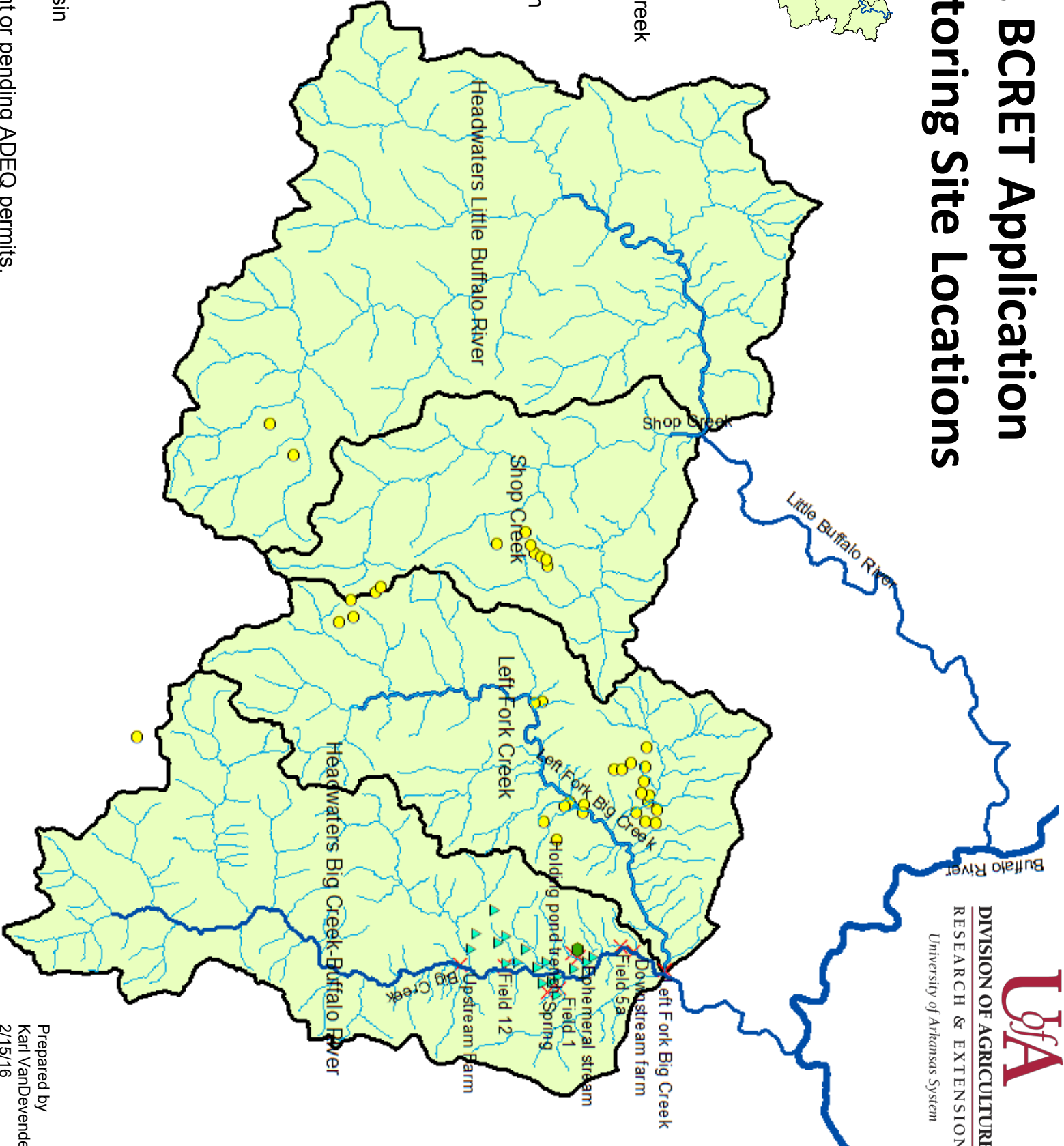


# C&H, EC, BCRET Application and Monitoring Site Locations



- C&H Barn
- ▲ C&H Application Sites\*
  - 17 in Headwaters Big Creek – Buffalo River Basin
- EC Application Sites\*
  - 2 in Headwaters Little Buffalo River Basin
  - 10 in Shop Creek Basin
  - 23 in Left Fork Creek Basin
- 1 outside Buffalo River Basin
- ✖ BCRET Monitoring Sites
  - 9 in Headwaters Big Creek – Buffalo River Basin
    - Upstream Farm
    - Field 12
    - Spring
    - Field 1
    - Holding pond trench
    - Ephemeral stream
    - Field 5a
    - Downstream farm
    - 1 in Left Fork Creek Basin
    - Left Fork Big Creek



**From:** [Solaimanian, Jamal](#)  
**To:** [Deardoff, Amy](#)  
**Subject:** FW: EC sites  
**Date:** Wednesday, May 25, 2016 12:26:34 PM  
**Attachments:** [CH EC BCRET Application and Monitoring Site Locations.pdf](#)

---

*Jamal Solaimanian, Ph.D., P.E.*

Engineering Supervisor  
Office of Water Quality, ADEQ  
501-682-0620  
[jamal@adeq.state.ar.us](mailto:jamal@adeq.state.ar.us)

---

**From:** Blanz, Bob  
**Sent:** Wednesday, May 25, 2016 11:44 AM  
**To:** Keogh, Becky; Osborne, Caleb; Chapman, Julie; Solaimanian, Jamal; McWilliams, Katherine  
**Subject:** FW: EC sites

---

**From:** Andrew N. Sharpley [<mailto:sharpley@uark.edu>]  
**Sent:** Tuesday, May 24, 2016 3:30 PM  
**To:** Blanz, Bob  
**Cc:** Karl VanDevender ([kvandevender@uaex.edu](mailto:kvandevender@uaex.edu))  
**Subject:** EC sites

Bob

Attached is a map showing the EC Farm application sites, which Karl VanDevender developed. You will note a majority of the sites are in the Left Fork Watershed, upstream of the site we started monitoring last year.

If you have any questions on this or related issues, please do not hesitate to contact me.

Cheers,

Andrew

Office: (479) 575-5721  
Cell (479) 871-6703  
Email: [sharpley@uark.edu](mailto:sharpley@uark.edu)